

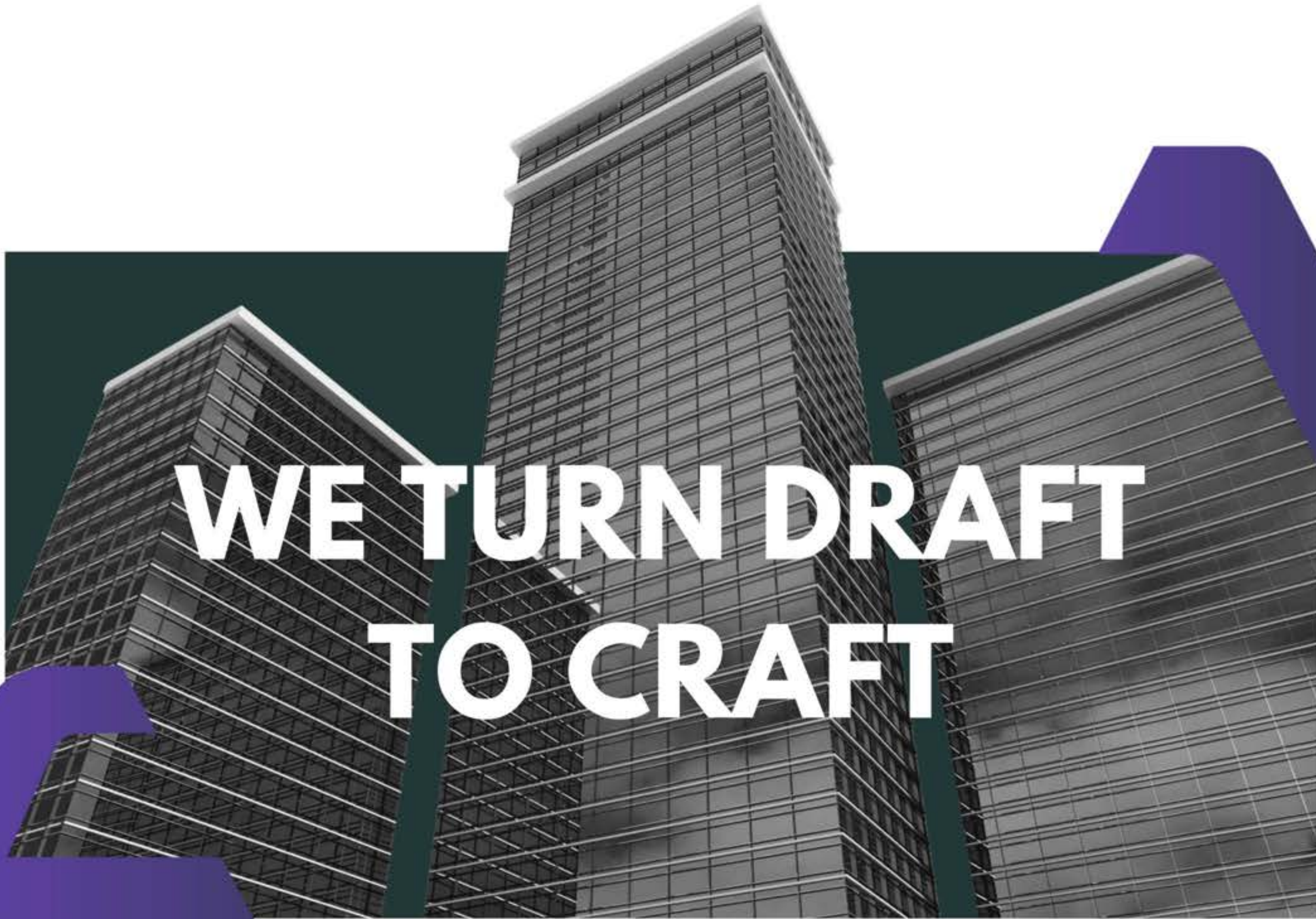


AFTERCAD

CONSTRUCTION & INTERIOR



www.ac-icc.com



**WE TURN DRAFT
TO CRAFT**



TABLE OF CONTENT

ABOUT US

GENERAL MANAGER MESSAGE

WHY US ?

CLIENTS

PROJECTS

KSA 2030 VISION

SISTER COMPANIES

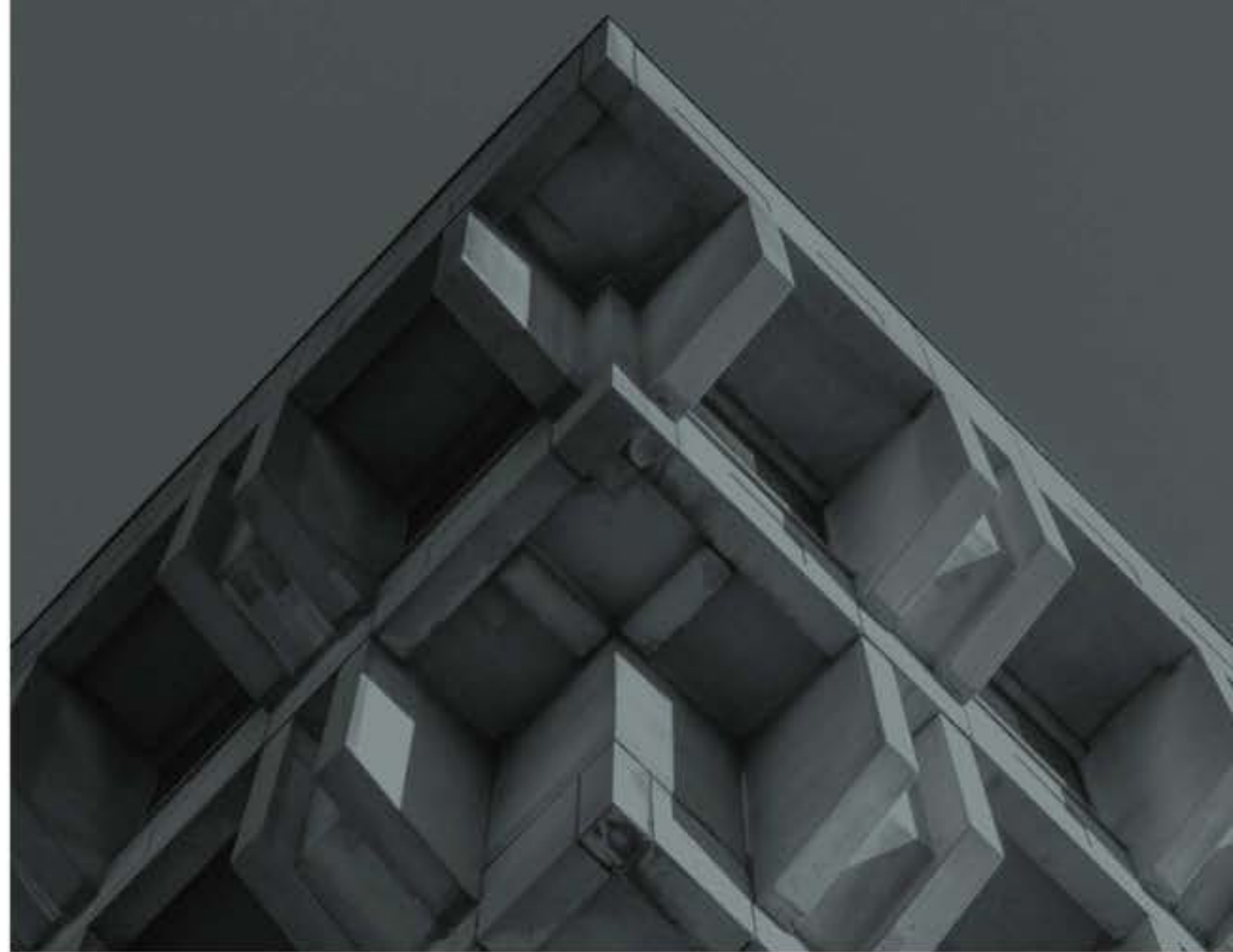




ABOUT US

AFTERCAD is a leading force in the construction industry, delivering innovative, reliable, and visionary projects across the Kingdom of Saudi Arabia.

Founded in Jeddah, AFTERCAD has established itself as a trusted general contractor and architectural firm. With deep knowledge of the Saudi market, we bring confidence and creativity to every project, combining expertise in civil works, concrete, MEP, furnishing and decorating, and full build-and-design services.





PROJECT AND

IN GOVERNMENT PRIVATE SECTORS

**FAST-TRACK
PROJECTS**

+500 team members
meeting and exceeding tight deadlines
Day & night work shifts

Wide-ranging projects
Spanning multiple sectors
Trusted by loyal clients
Proven on-time delivery record



EXTENSIVE SERVICES

From planning to launch,
everything a project needs to
thrive

CLIENT-CENTRIC

Swift design to reality transition
Minimal to no alterations On-Time
Functional. Beautiful. Tailored.

RENOWNED PARTNERS

General Authority of Civil Aviation
JEDCO.
Saudi Air Navigation Services
SAMI Advanced Electronics
Emirates





GENERAL MANAGER MESSAGE

In AFTERCAD, we ensure that each project is tailored to meet your unique vision and needs. Our dedicated teams provide seamless, high-quality services across all facets of construction, fostering open communication and collaboration. This doesn't just create a project, but a lasting partnership built on trust and mutual success.

With over two decades of industry experience, AFTERCAD has established itself as a beacon of reliability and quality. We have complete trust in our team's ability to deliver outstanding results. Our meticulous planning and commitment to proven construction principles ensure we exceed client expectations, providing beautiful and durable spaces.

ENG. AMER ALLABABIDI “

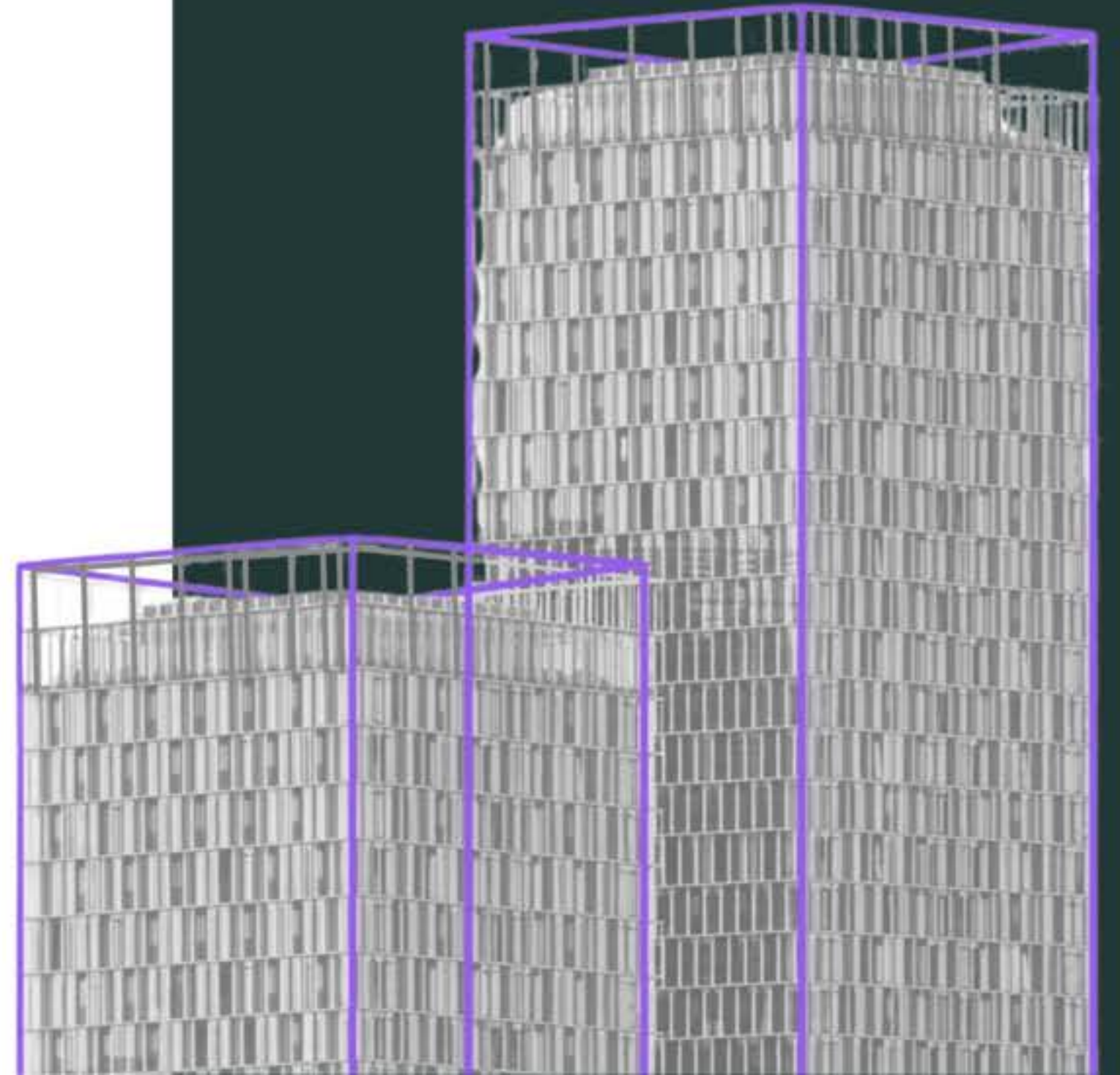


MISSION

Deliver top-tier construction solutions and secure partnerships with high-profile clients through the highest standards of quality, efficiency, and timeliness in KSA. We use cutting-edge technologies and an up-to-date workflow to develop the most efficient and cost-effective methods of completing projects that exude excellence.

VISION

To become the preferred construction partner for market leaders. To set the new market standards for reliable, swift, and effective construction solutions and to play a pivotal role in the KSA 2030 Vision.



WHY US?



INTEGRITY

We guarantee honesty and transparency, with every step guided by strong business ethics



COLLABORATION

We value fruitful partnerships and maintain open communication to reach one ultimate goal: building successful creations under one shared vision



EXCELLENCE

A sure place to find meticulous planning, execution, and attention to detail. We are committed to setting new standards for project excellence and our clients expectations

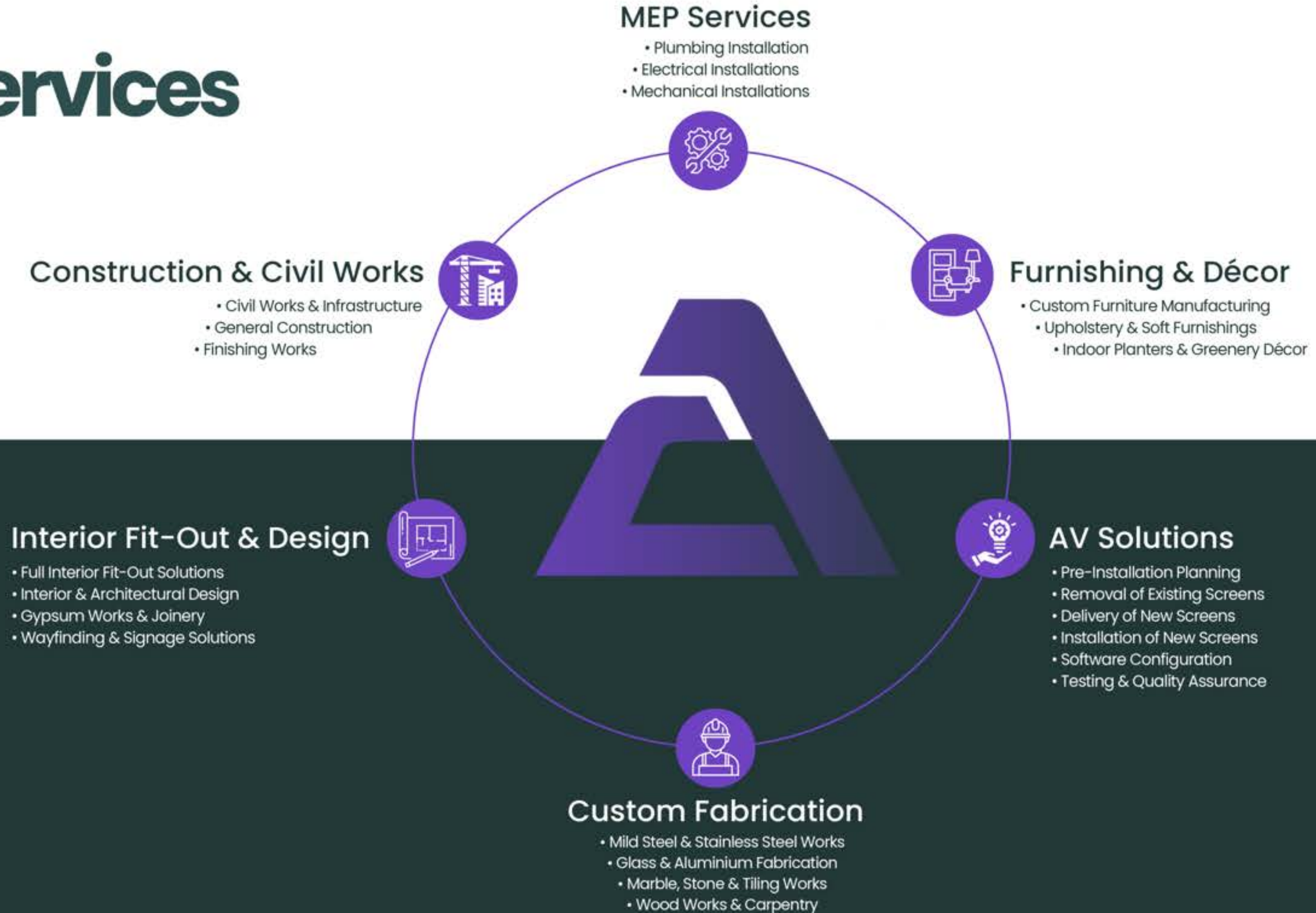


SPEED

With quality coming first, we bring your vision from the ground up in record time.
Indonesian Embassy (150 days. A to Z)
Zahran Workers Buildings (80 days. 17 buildings. A to Z)



Services





ASSETS

EQUIPMENT



With over 100 machines equipped with cutting-edge technology, we ensure precision, efficiency, and reliability on every project site. Our advanced equipment allows us to tackle complex challenges and deliver results that meet the highest standards of quality and innovation.

MANPOWER



Backed by a team of more than 500 skilled professionals, we are constantly on the move, combining expertise, dedication, and creativity to bring our clients' visions to life. From engineers and craftsmen to designers and project managers, our people are the driving force behind every success we achieve.





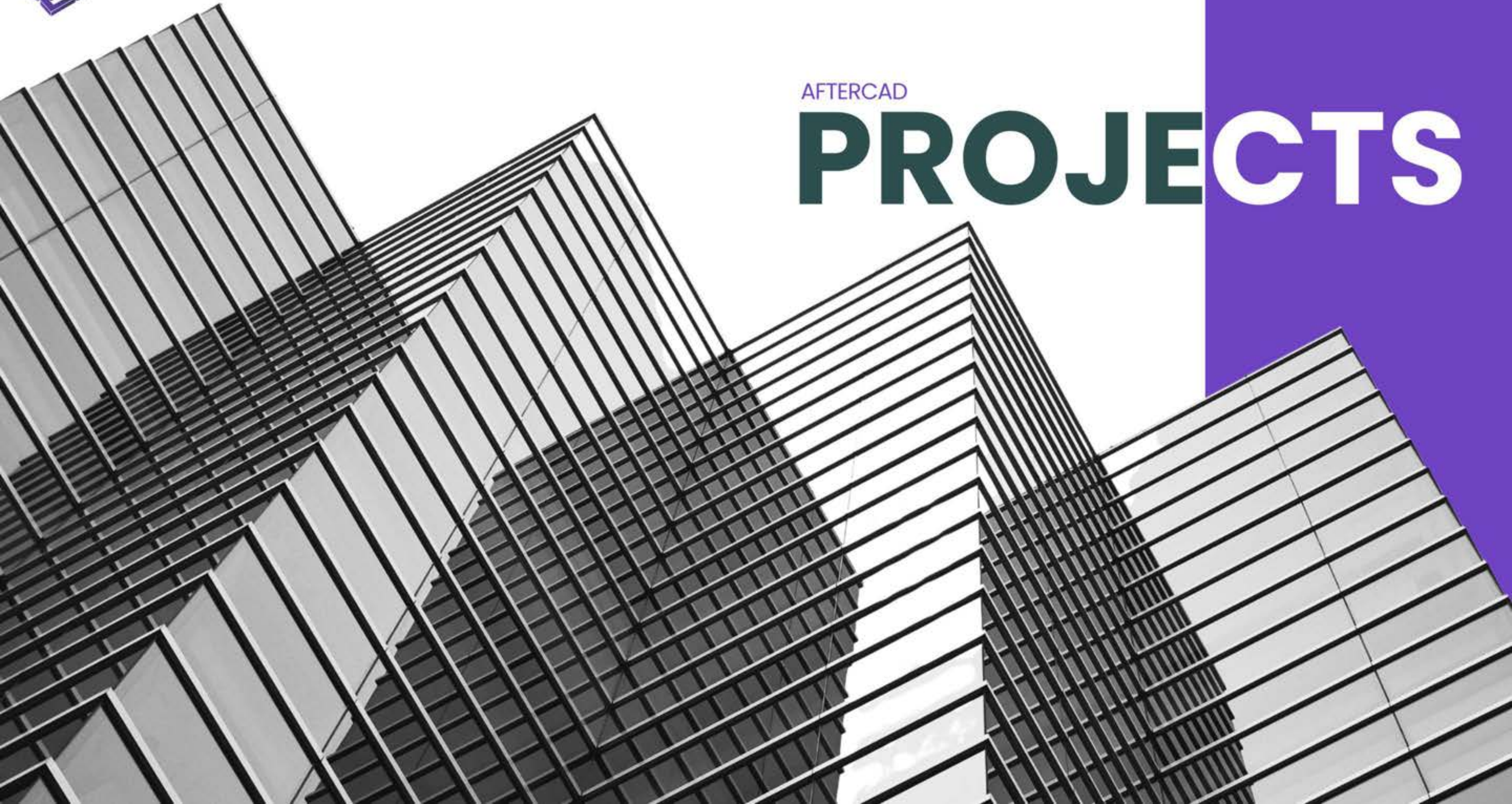
CLIENTS





AFTERCAD

PROJECTS





GOVERNMENTAL PROJECTS





SAMI ADVANCED ELECTRONICS

Queue Management System - Infrastructure IT

To enhance passenger flow management and operational efficiency by implementing an advanced Queue Management System (QMS) using smart sensors throughout Jeddah International Airport.

The system will provide real-time monitoring of queue lengths, wait times, and crowd density to optimize service delivery and reduce congestion





SAMI ADVANCED ELECTRONICS

Airports : JED - TIF - ABT -
BHH - SHW - EAM - GIZ -
AHB

SHW



JED



TIF



EAM



ABT





T1 MULTI PURPOSE SEATING PROJECT

Furniture – Finishing Works – Floorbox

At King Abdulaziz International Airport, our team managed a comprehensive project across 12 zones – from furniture installation to defect rectification. We handled demolition, electrical works, carpeting, and marble flooring with precision. Every step balanced efficiency with the airport's high operational standards. Resulting in a flawless, functional, and visually elevated environment.





Jeddah Islamic Port

Main Administration Building

**Civil works - Concrete works
- MEP - Finishing works - Fit-out**

A two-story Main Administration Building featuring ample parking and landscaping on a 45,000 square meter area.





Consulate General Of The Republic Of Indonesia



**Civil works - Concrete works
- MEP - Finishing works - Fit-out - Joinery - EPC**



A project comprised of two floors across a 3,150 square meter area, executed from design to construction services, architectural planning, and interior finishing.





JEDCO

Check point

Civil Works - Concrete Works - MEP -
Finishing Works - Fit-out.





JEDCO



Hajj & Umrah

Civil Works – MEP – Finishing Works

This project entails significant upgrades to accommodate the Hajj and Umrah services requirements in Terminal 1. It involved a substantial scope of work, including excavation, subgrade adjustments, and various installations like seating, curbstones, and special coatings for different sections of the terminal.





COMMERCIAL PROJECTS





EMIRATES LOUNGE

KAIA – JEDDAH

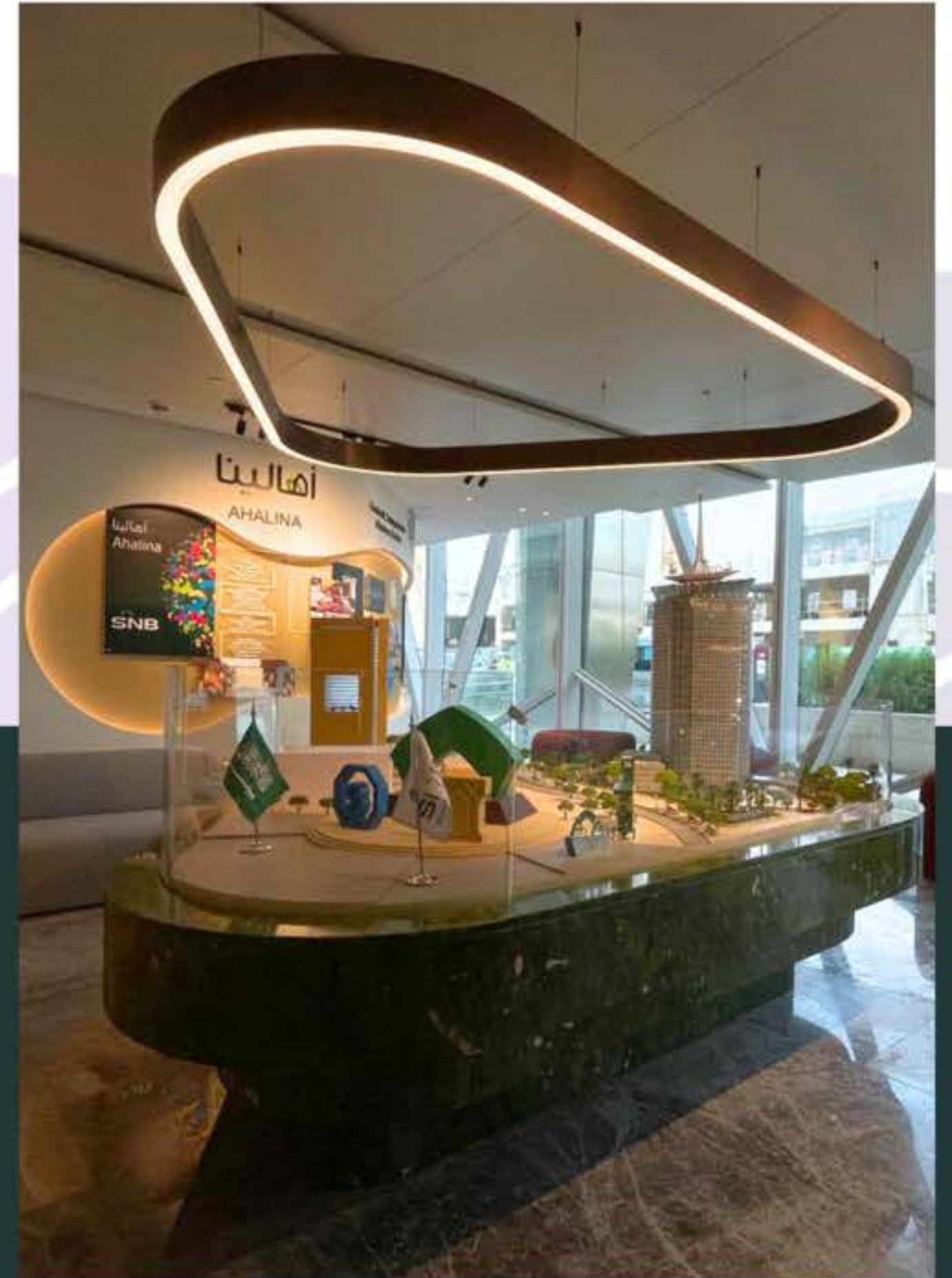
MEP – Finishing works- FIT-OUT- joinery -
Furnishing and decorating works





SNB RIYADH

Signage design project for SNB aimed to create a professional, consistent, and brand-aligned signage system for the bank's branches. The scope included interior and exterior signage.





ASTERI

RED SEA MALL - JEDDAH

Delivered luxury fit-out and MEP services for an exclusive project, emphasizing high-end finishes.





DIOR

Riyadh - Al Hayat Mall

2 BRANCHES

MEP - FIT-OUT

Abha - Alrashid Mall



Riyadh - Al Hayat Mall

Abha - Alrashid Mall



MAGRABI

KHALID BIN WALID BRANCH - RIYADH

MEP - Finishing works- FIT-OUT

Creating a sophisticated, customer-centric environment using high quality materials and craftsmanship delivering premium interior finishes that enhance brand presentation and shopper experience.





MAGRABI

AL WADI PLAZA BRANCH - RIYADH

MEP - Finishing works- FIT-OUT

Creating a sophisticated, customer-centric environment using high quality materials and craftsmanship delivering premium interior finishes that enhance brand presentation and shopper experience.



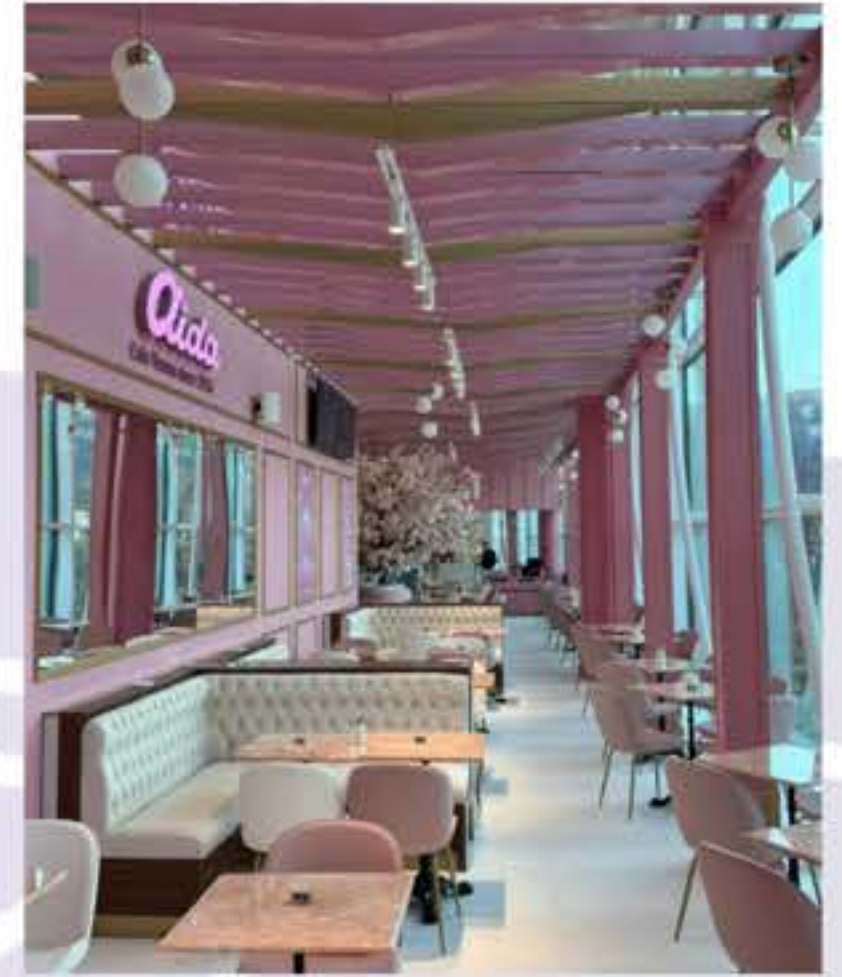


AIDA

KAIA - JEDDAH

MEP - Finishing works- FIT-OUT

Delivered a complete fit-out, including furnishings and joinery, for a major project in just 45 days.
Location: Jeddah, King Abdulaziz International Airport





PIZZA EXPRESS

Civil Works - MEP - Fit-out - Furnishings - Joinery

Delivered a complete fit-out, including furnishings and joinery.



VOLO

Civil works - MEP - furnishing - Finishing works

Completed construction, interior setup, and operational preparations.





STARBUCKS

JEDDAH, RIYADH, AND AL MADINAH

MEP - Finishing works- FIT-OUT

7 Branches





RED SEA MALL

JEDDAH

FIT-OUT

Enhancing the customer service desks at Gates 1 and 3, alongside a comprehensive upgrade that includes the addition of new seating and extensive greenery throughout the mall, this initiative aims to improve the shopping experience by providing more efficient and accessible customer services and overall aesthetic appeal.





IVORY SQUARE

JEDDAH

AL-FAYHAA DISTRICT



Developed a mixed-use space in Al Fayhaa District, Jeddah, featuring 78 parking spots, 3 offices, 11 retail stores, and a gym.



FIT LAB GYM

Ivory Square, Al-Fayhaa District, Jeddah.

Civil Works - Concrete Works - MEP - Fit-out - EPC - Finishing Works -
Joinery



Constructed a state-of-the-art ladies' gym in Ivory Square, Jeddah, achieving excellence in both design and functionality.



AL-MADINAH OPTICALS AND HEARING

JEDDAH & AL-TAIF

Civil Works - Fit-out - MEP - Joinery

Executed full-scale civil, MEP, and fit-out services for two branches. Both locations, Jeddah and Al-Taif, feature a spacious two-floor layout.





ADMINISTRATIVE PROJECTS





ACES JEDDAH

Civil Works - Concrete Works - Fit-out - MEP - Joinery - Finishing Works

This Jeddah branch comprises three floors each spanning 1,050 square meters featuring underground parking facilities, completed in 8 months.





CONTINENTAL OFFICES

Civil works - MEP - Fit-out - Joinery

The COSKO main office is a project in Jeddah that encompasses the construction of a 312-square-meter office space aimed at improving workplace functionality and aesthetics for employees.

80 DAYS





ALAS GROUP





King Abdullah Port Offices





VIRTUAL OFFICE





Private Office





INDUSTRIAL PROJECTS





SOLB TOHAMA STEEL FACTOR

CIVIL WORKS – CONCRETE WORKS

Civil works – Concrete works Covering 55,000 square meters in two phases, this project features production lines, cooling systems, storage tanks, and infrastructure for steel production.



RESIDENTIAL PROJECTS





AL FALAH VILLAS

CIVIL WORKS - CONCRETE WORKS - MEP - FIT-OUT -
JOINERY WORKS

This project encompasses the development of four luxurious villas, executed with a keen focus on modern architectural design and high-quality living standards offering comfort and premium residential solutions.



This multiple-story residential and commercial complex is a significant architectural endeavor of a built area of 4,800 square meters on a land area of 1,200 square meters.

AL- RAWDAH BUILDING

CIVIL WORKS - CONCRETE WORKS - MEP - FIT-OUT -
JOINERY WORKS



Spanning 1,620 square meters, this project comprises the development of a residential building including multiple spacious apartments, each crafted to provide a luxurious and comfortable living experience.

AL- BAWADI BUILDING

**CIVIL WORKS - CONCRETE WORKS - MEP - FIT-OUT -
JOINERY WORKS**



A construction project of a residential complex over an area of 2,740 square meters. Completed in 240 days as a clear example of efficient project execution.

AL- RAYAN BUILDING

CIVIL WORKS - CONCRETE WORKS - MEP - FIT-OUT -
JOINERY WORKS

240 DAYS



With 17 buildings dedicated to housing the company's workers, this extensive project covers 25,000 square meters and includes 400 bathrooms distributed across 10 units, each unit spanning 220 square meters. The development features four central kitchen buildings each covering 400 square meters, and three central workshops. This construction plan ran 24/7 to be completed within a highly ambitious 80-day period.

ZAHRAN WORKERS BUILDING

CIVIL WORKS - CONCRETE WORKS - MEP - FIT-OUT - JOINERY WORKS

80 DAYS

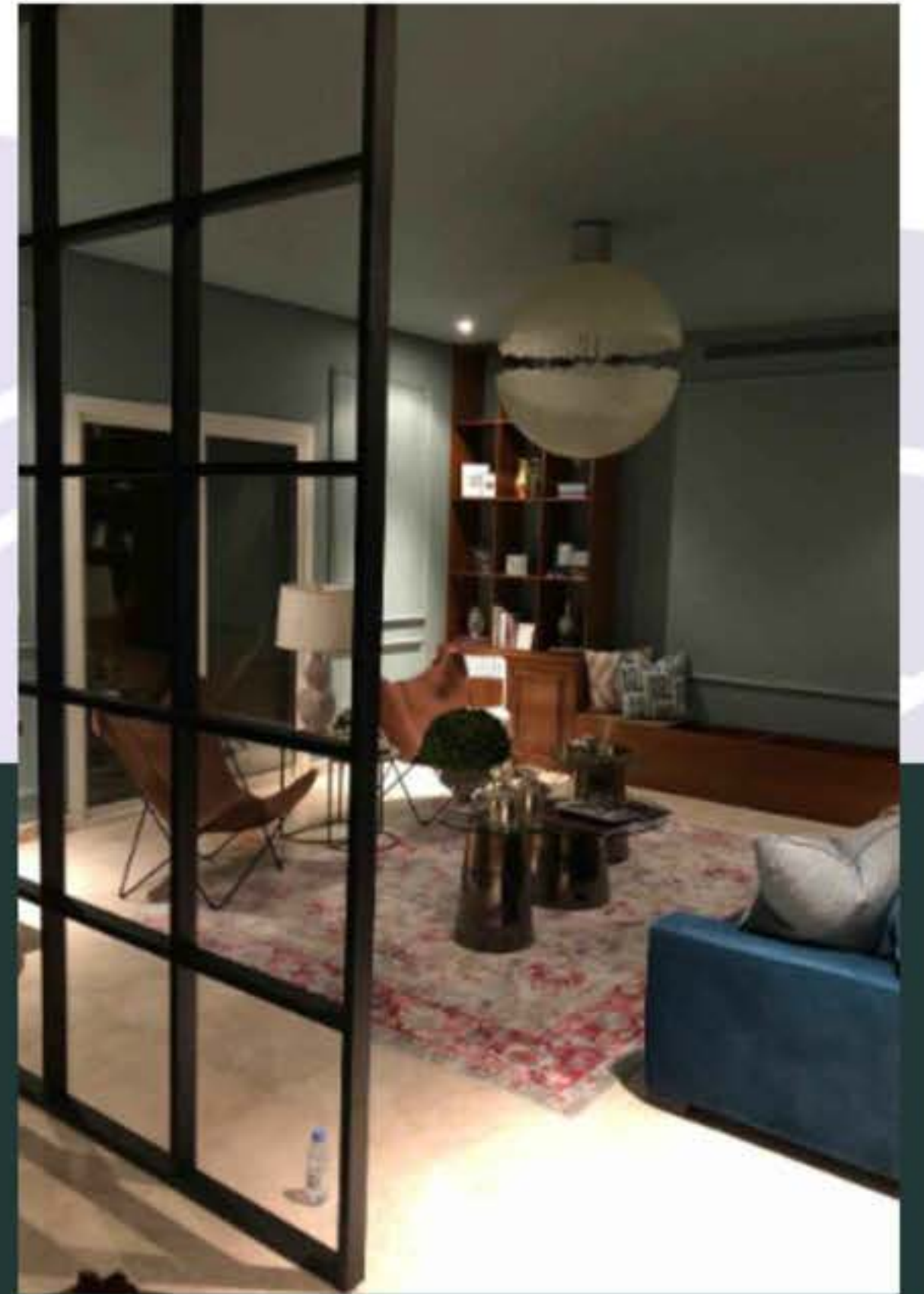
RUSH PROJECT



PRIVATE VILLA

Civil works - MEP - Furnishing - Finishing works

Completed construction, interior setup, and operational preparations.





PRIVATE VILLA

Civil works - MEP - Furnishing - Finishing works





PRIVATE VILLA

Civil works - MEP - Furnishing - Finishing works





PRIVATE VILLA

Civil works - MEP - Furnishing - Finishing works



PARTNERSHIP



AFTERCAD

CONSTRUCTION & INTERIOR

Unilumin





| UNILUMIN PARTNERSHIP



In partnership with Unilumin, a global LED leader, we deliver reliable, high-quality AV systems for airports, malls, arenas, and stadiums offering unmatched clarity, creativity, and dependability.

Advancing the Future of AV Innovation.



UNILUMIN CASES

RIYADH SEASON

7,000 SQM LED Display
Huge, iconic installation with design, hardware, software, and 3D content.



RIYADH SEASON



JEDDAH

STARS AVENUE - 1000 SQM LED DISPLAY

ALAWWAL PARK STADIUM

LED & Perimeter Displays
Shows sports applications (tunnel screens, perimeter boards, VIP lounge, and outdoor screens).



RIYADH



JEDDAH SEASON

City Walk (UGMII 24m x 90m)

Massive outdoor rental display, vibrant and eye-catching



FINISHED PROJECTS

Classification	Contracting Entity	Project
Governmental	Jeddah Islamic Port	Construction of Administrative Building at Jeddah Islamic Port
Governmental	Faqih Group	Construction of Infrastructure Networks in Taif
Governmental	JEDCO	Hajj and Umrah Requirements
Governmental	Indonesian Consulate in Jeddah	Construction of Indonesian Consulate Building in Jeddah
Governmental	Jeddah Islamic Port	Construction of Buildings, Workshops, and Warehouses at Jeddah Islamic Port
Governmental	JEDCO	Development Project for the Office Area in the North Terminal
Governmental	JEDCO	Construction of Offices in the Hajj Sorting Area
Governmental	Taif Municipality	Visual Distortion Treatment Project
Governmental	JEDCO	Hajj Route Safety Project
Governmental	Ministry of Education	Miscellaneous Maintenance for Several Schools in Al-Aflaj
Governmental	JEDCO	North Terminal Canopy Construction Project
Governmental	JEDCO	Employee Entrance and Exit Project in the North Terminal
Governmental	Ministry of Education	Maintenance of BCD Canopies for Several Schools Project
Governmental	JEDCO	Expansion of Inspection Area in the North Terminal
Governmental	JEDCO	Expansion of Airport Security Inspection Area
Governmental	Ministry of Education	Rehabilitation of Administration Building in Al-Aflaj
Governmental	Al-Aflaj Education Administration	General Maintenance for Schools in Al-Aflaj
Governmental	Ministry of Education	Maintenance of Water and Sewerage Network at King Fahd School
Governmental	Masook Contracting Company	Construction of Small Model School in Al-Aflaj
Governmental	Ministry of Education	Construction of Fire Network and Alarm System for Services and Maintenance Building in Al-Aflaj
Governmental	Ministry of Education	Restoration and Modification of School Equipment Offices in Al-Aflaj
Governmental	Jeddah Islamic Port	Supply and Installation of Air Conditioning Units at the Port
Governmental	Ministry of Education	Rehabilitation of Permanent Islamic Awareness Center at Quran Memorization School in Al-Aflaj
Governmental	Al-Aflaj Education Administration	Electrical Network Maintenance
Governmental	Education Administration	Maintenance of Quran Memorization School in Al-Aflaj
Governmental	Al-Aflaj Education Administration	Construction of a Field and its Facilities in Al-Ahmar
Governmental	Hawadi Company	Southern Jeddah Saden Project
Religious Places	Mr. Ahmed Salem Ahmed Bin Mahfouz	Expansion and Renovation Project of Bin Yamani Mosque
Administration	Arab Company	Construction of Laboratory Building

Classification	Contracting Entity	Project
Commercial	Emirates Airlines	Construction of Emirates Airlines Lounge at Jeddah Airport
Commercial	Bin Yamani Holding Group	Construction of Ivory Square in Jeddah
Commercial	ADNOC Company	Construction of ADNOC Stations in Al-Dillil and Al-Kharj
Commercial	Red Sea Mall	Project for Supply and Installation of Counters
Commercial	SOL Advanced Company	Construction and Finishing of Barnie's Al-Kharj Project
Commercial	Vision Real Estate Consulting Company	Construction of Vision Fuel Station in Jeddah
Commercial	Magrabi Optics Company	Finishing Project for Magrabi Khalid Bin Al-Walid
Commercial	BCD Arabia Company	Finishing Project for Dior Exhibition
Commercial	Alshaya Company	Construction and Finishing of Starbucks Park Square
Commercial	Al-Madina Hearing Center	Interior Finishing for Al-Madina Hearing Center - Jeddah
Commercial	SBS Arabia Company	Interior Finishing for Airport Shops Project
Commercial	Enteema Real Estate Services Company	Construction of Costa Coffee Project
Commercial	Magrabi Optics Company	Finishing Project for Magrabi Wadi Plaza
Commercial	SOL Advanced Company	Construction and Finishing of Barnie's Al-Baha Project
Commercial	Alshaya Company	Construction and Finishing of Starbucks Princess Noura Project
Commercial	Princes Coffee Foundation	Construction of Princes Cafe on the Corniche
Commercial	Al-Ghazzawi Development Company Limited	Construction of Joffrey's Cafe - Al-Hazm - Riyadh
Commercial	Al-Madina Hearing Center	Interior Finishing for Al-Madina Hearing Center - Taif
Commercial	Al-Ghazzawi Development Company Limited	Finishing of Joffrey's Cafe - North Terminal Jeddah Airport
Industrial	TohamaSteel Company	TohamaSteel Plant Project Phase Two
Industrial	MODON	Completion of 16 Warehouses in the Industrial City
Industrial	TohamaSteel Products Plant Company	Construction of TohamaSteel Plant in Jeddah Phase One
Residential	Osool Real Estate Company	Construction of Villa Complex in South Obhur, Jeddah
Residential	Osool Real Estate Company	Construction of Villa Complex in Al-Faiha District, Jeddah
Residential	Nihad Kamal Tawfiq	Construction of Residential Building in Al-Rawda District, Jeddah
Residential	Bin Yamani Holding Group	Construction of Building in Al-Faiha District, Jeddah
Residential	Zahran for Maintenance and Operation	Supply, Manufacture, and Implementation of Workers' Housing and Workshop in Riyadh
Residential	Sheikh Saad Al-Harithi	Construction of Al-Falah Villa Complex Project
Residential	Samir Kabadia	Construction of Al-Bawadi Building Project
Residential	Khaled Basamh	Construction of Al-Safa Building Project
Residential	Sheikh Saad Al-Harithi	Construction of Al-Manarat Villa Complex Project



CONTRIBUTION TO INFRASTRUCTURE DEVELOPMENT

MODERNIZING URBAN SPACES

SUPPORTING ECONOMIC DIVERSIFICATION

DIVERSIFIED SERVICE OFFERINGS

ADOPTION OF ADVANCED TECHNOLOGIES

TECHNOLOGICAL INNOVATION

FOSTERING LOCAL TALENT

SKILL DEVELOPMENT INVESTMENTS



**SISTER
COMPANIES**



**International Capital[®]
Constructions.**



AFTERCAD

C O N S T R U C T I O N & I N T E R I O R

amer@ac-icc.com

KSA : +966 55 949 5002

KSA : +966 12 581 0334

UAE : +971 55 709 9508

First Floor, Riyadh Plaza Altahliah, Jeddah KSA

